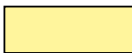





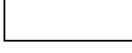




FIGURE 4A. LAND USE PLAN

LAND USE SUMMARY

		Land Use Category	AC	DU	SQ.FT.
LAND USE		Single Family	267.4	1,744	
		Multi-family	74.5	1,085	
		General Commercial	20.4	321	38,700
		Highway Commercial	2.5		32,175
		School ¹	43.5		
		Fire Station	1.4		
OPEN SPACE		Street ROW	120.5		
		Recreation/Park ²	167.0		
		Natural Open Space/Slope ³	632.5		
TOTAL			1,329.7	3,150	70,875

¹ The existing 20.6-acre Northlake Hills Elementary School is included in the school area.
² Grasshopper Creek Park includes 3.2-acre of debris basin.
³ Manufactured slope area includes 17.0-acre of debris basin, 7.1-acre of water tank, and 0.2-acre of pump station.

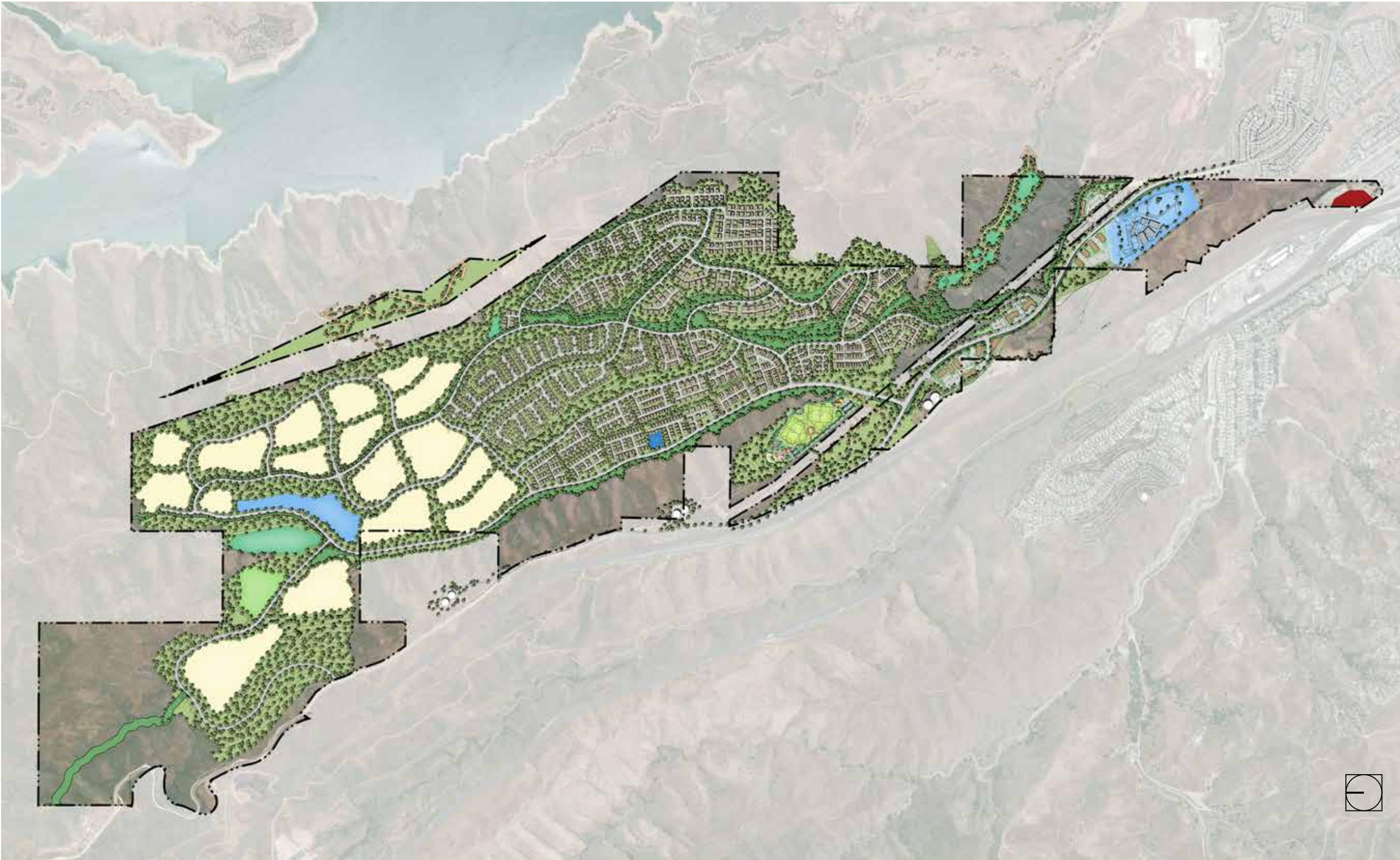


FIGURE 4B. ILLUSTRATIVE SITE PLAN